

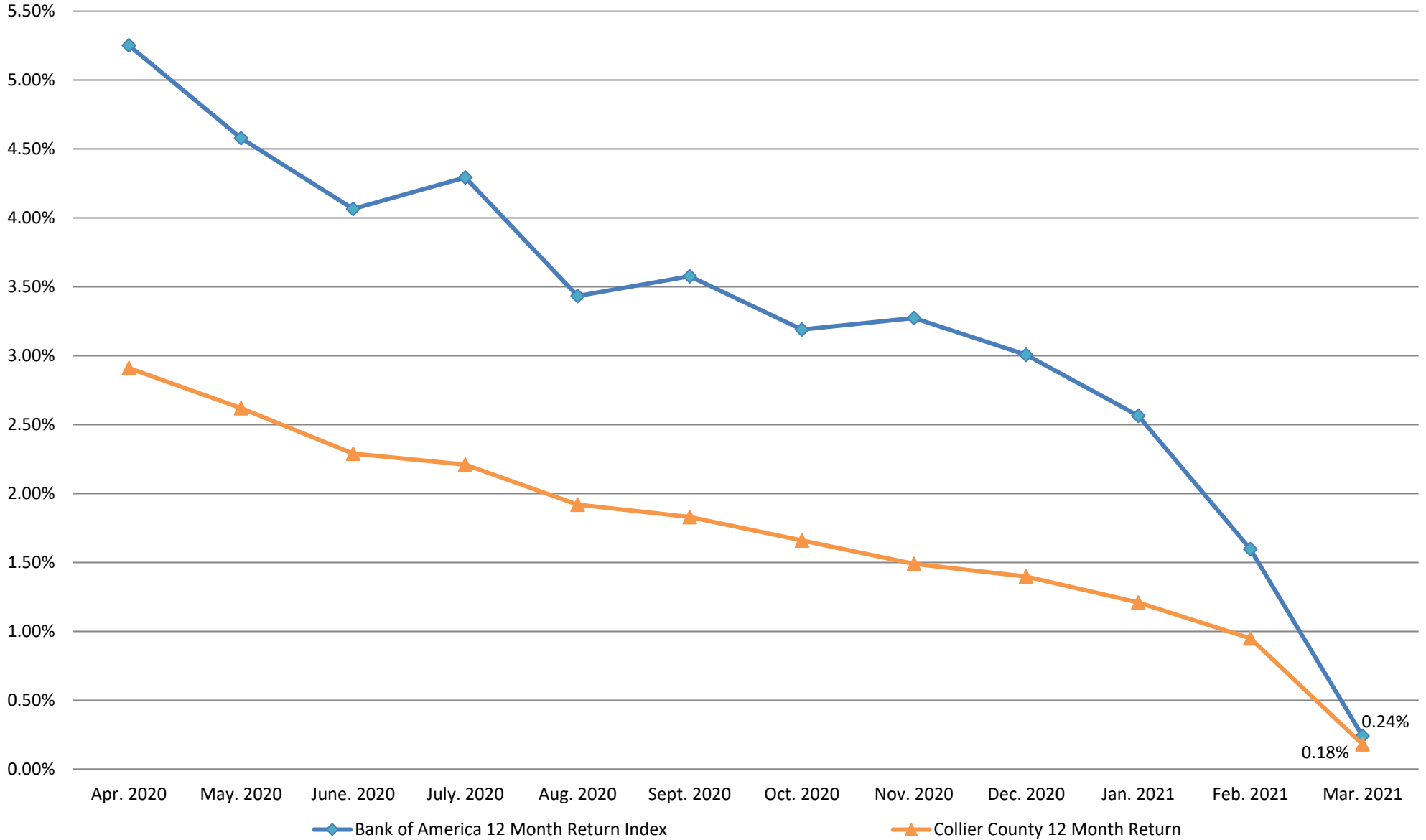
# Collier County Long Term Sector

## 12 Month Total Return

vs.

## B of A 1-3 US T Index 12 Month Total Return

Note: Total return includes both interest earnings and changes in the market value of the underlying securities.



**Commentary:** Twelve (12) month total return performance to benchmark has narrowed considerably as of March 31, 2021, but Treasuries out-performed the portfolio's mixture of Treasuries and callable agencies for the month of March 2021.